



ZÄHBUILT | PRODUCT CATALOG



Designed and Fabricated in Melbourne, FL U.S.A. 🇺🇸

[ZAHBUILT.COM](https://zahbuilt.com)



REIMAGINING THE WAY WE LIVE

📞 321-308-3297

✉ SALES@ZAHBUILT.COM

📍 325 EAST DRIVE, MELBOURNE, FL 32904

ZAHBUILT.COM

TABLE OF CONTENTS

SPECIFICATIONS	4
DOOR STYLES	9
FINISHES	18
GRILL BASE CABINETS	22
CERAMIC GRILL CABINETS	27
BASE CABINETS	31
WALL CABINETS	40
TALL CABINETS	43
PANELS, FILLERS & ACCESSORIES	45
WINDSWEPT MOULDINGS	58
HOODS	64



SPECIFICATIONS



Windswept Collection / Sahara

CABINET CONSTRUCTION SPECIFICATIONS

CABINET BOX

Cabinet sides, top and bottom are constructed with a 3/4" thick, lightweight HDPE (LDPE) poly marine board that is UV stable. It is NOT PVC.

All of the components are assembled with "lockdowels"™. These fasteners are made from high strength plastic and CNC machined into the cabinet parts.

EDGE BANDING

There is no edgebanding, the LDPE is solid black and all cabinet edges are black. The full overlay door covers all but 1/8" of the edge. This also eliminates possible edgebanding point of failure.

CABINET BACK

All cabinets have a 1/4" thick (LDPE) back with 4" nailers top and bottom.

SHELVES

Shelves are 3/4" thick LDPE. There are shelf holes drilled in 32mm (1 1/4") increments. All shelves are full depth.

DRAWER BOXES

Standard drawer boxes are constructed with 3/4" LDPE sides and back with a 1/4" thick bottom and assembled with lock dowels. Full extension soft-close bottom mount slides are treated for corrosion.

DOOR HINGES

Hinges are soft-close stainless steel 110° concealed hinges with 6 way adjustment.

FINISHED ENDS

Finished ends can be purchased loose. Finished end panels are the thickness of the species panel, which adds to the overall width of a cabinet.

TOE KICK

All base and tall cabinets are constructed on adjustable leg levelers. 3 1/2" to 5" high. Additional height levelers and spacers available.



CABINET STANDARDS

GENERAL SPECIFICATIONS

We manufacture our cabinet boxes using 3/4" Black LDPE (Low Density Polyurethane). LDPE is UV stable.

CABINET SIZES

Available in sizes listed only. To increase the depth of a cabinet, modification charges will apply. See modification section for up-charges. Modifications limited to the nearest inch.

MINIMUM CABINET WIDTH

With doors: 9" W based on the minimum width of available door styles. With drawers: 12" W

MAXIMUM CABINET WIDTH

To be warrantied, the maximum width of a specific cabinet type is the width listed as the largest available.

MINIMUM HEIGHT

With doors: 12" H

MAXIMUM HEIGHT

90 1/2"

STANDARD CABINET DEPTHS *(Defaults)*

Wall cabinets: 12" D

Base cabinets: 24" D

Grill base cabinets: 28" D

Burner base cabinets: 28" D

Wall depth cabinets: 13" D

Base depth tall cabinets: 24" D

MAXIMUM DEPTH

32" D. When the depth is increased for cabinets with drawers and/or roll out drawers, the drawer box depth remains 21" regardless of cabinet depth.

FINISHED ENDS

ZähBuilt provides finished ends as an applied panel, subject to additional up-charges. Integrated finished end available in Sonoma collection.

TOE KICK

ZähBuilt provides plastic leg levelers that are adjustable from 3 1/2" H to 4-1/2" H. We also offer door matching toe kick planks



GENERAL KNOWLEDGE

GENERAL INSTALLATION GUIDELINES

- It is very important the cabinetry is installed level and plumb. This will ensure the doors hang properly. The fronts are set squarely at the factory. If the cabinet is not level, the doors are drawers will be skewed. Only after leveling should the doors be adjusted.
- To adjust the floor levelers, we recommend the use of the Hafele leveler tool (PN # 637.76.430) for easy access, available from ZähBuilt or Hafele direct.
- Use stainless steel screws and washers for installation hardware.
- Grill panels may be removed in order to trim and fit to the grill. The countertop thickness will determine the depth of the cut. Reattach the trimmed grill panel using lock dowels if accessible.
- The door adjustments are accessible by removing the cover plate on the hinge arm.
- There is a small amount of adjustment available on the drawer by using the dials on the drawer box clips.

CABINETRY AND PARTS

- The LDPE cabinet parts saw and machines similar to MDF with smooth, non-splintered, chip free cuts.
- Cleans with soap and water. Use denatured alcohol or non oil based cleaners for greasy spots.
- All cabinet backs are 1/4" LDPE with 4" nailers top and bottom.
- We recommend 1-1/4" stainless steel washer head screws for joining cabinets and fillers, etc.
- Bases come with adjustable leg levelers, making installation easy on sloped floors.
- The toe plates are held in place with a friction clip on the leveler, additional screws could be used as necessary.

GRILL ACCOMODATIONS

- An insulation jacket is required for gas grill cabinets.
- The cabinet needs to be minimum 3" wider than grill insulation jacket, preferably 6" + (must be 6" wider for NEO collection).

WORKING WITH OUR SONOMA HPL PANELS

SAWING

- Sonoma panels can be cut on stationary circular saws, portable circular saws or jig saws using carbide tipped blades.
- We recommend alternating bevel fine cutting blades.
- Cutting too fast or too slow can result in surface discoloration. The discolored surface can be sanded off using 180 - 220 grit sandpaper.

FINISHING

- Cut edges are dangerously sharp and need to be eased. We recommend routing the edges or breaking the edge with sand paper.
- Teak or mineral oil can be used to polish the edges and add a layer of protection.

DRILLING

- Use high-speed steel drill bits.

ATTACHING

- Stainless steel screws offer the most secure way of attaching Sonoma panels/fillers/overlay doors to our cabinetry.
- Carefully drill a pilot hole first. Stainless steel self tapping screws are a good option as Sonoma panels produce a fine thread and can be tapped.
- VHB tape is a good alternative for panels resting on a solid surface or to hold panels until the adhesive sets.



The image displays three kitchen cabinet door styles side-by-side. The leftmost cabinet is a solid grey color with two drawers at the top and a single door below, all featuring horizontal silver handles. The middle cabinet has a light wood grain finish with two drawers and a door, also with horizontal silver handles. The rightmost cabinet is a dark wood grain finish with two drawers and a door, featuring horizontal silver handles. All three cabinets have a dark countertop and are mounted on black leveling feet.

DOOR STYLES

WINDSWEPT/LOUVER DOOR

Specifications

COLLECTION

Windswept

CONSTRUCTION

1" thick Stiles & Rails, 5/8" Panel

RAIL WIDTH

2 3/4"

MINIMUM/MAXIMUM

DOOR WIDTH

12" / 24"

MINIMUM/MAXIMUM

DOOR HEIGHT

12" / 60"

DRAWER FRONTS

The top drawer face is always a 7" high SLAB. drawer fronts over 8" can be ordered in a stile and rail configuration for an additional cost

FINISHED BACK OF DOOR

Painted Base Color only, no glaze

EDGE PROFILES



The center louver is accomplished by stacking 6" wide T & G moldings. The moldings "float" between the stiles and rails utilizing our patent pending design. This method of assembly mitigates movement that may split the frame or damage the paint.



Windswept Collection / Cyclone

WINDSWEPT/SHAKER DOOR

Specifications

COLLECTION

Windswept

CONSTRUCTION

1" thick Stiles & Rails, 5/8" Panel

RAIL WIDTH

2 3/4"

MINIMUM/MAXIMUM

DOOR WIDTH

12" / 24"

MINIMUM/MAXIMUM

DOOR HEIGHT

12" / 60"

DRAWER FRONTS

The top drawer face is always a 7" high SLAB. drawer fronts over 8" can be ordered in a stile and rail configuration for an additional cost

FINISHED BACK OF DOOR

Painted Base Color only, no glaze

EDGE PROFILES



The center panel is "floating" between the stiles and rails utilizing our patent pending design. This method of assembly mitigates movement that may split the frame or damage the paint.



Windswept Collection / Sahara

WINDSWEPT/SLAB DOOR

Specifications

COLLECTION

Windswept

CONSTRUCTION

Slab

MINIMUM/MAXIMUM

DOOR WIDTH

12" - 24"

MINIMUM/MAXIMUM

DOOR HEIGHT

12" / 60"

DRAWER FRONTS

1" thick slab with integral edge detail

GRAIN DIRECTION, DOOR

Grain direction is vertical on doors,
horizontal grain not available

GRAIN DIRECTION, DRAWER

Grain direction is horizontal on
drawers, vertical grain not available

FINISHED BACK OF DOOR

Painted base color only, no glaze

EDGE PROFILES



Windswept Collection / Wave Crest

SONOMA/SLAB DOOR

Specifications

COLLECTION

Sonoma

CONSTRUCTION

5/8" Sonoma (phenolic resin) door with micro chamfer with an ebony colored polished edge

MINIMUM/MAXIMUM

DOOR WIDTH

9" / 21"

MINIMUM/MAXIMUM

DOOR HEIGHT

12" / 60"

DRAWER FRONTS

5/8" thick slab with micro chamfer edges

GRAIN DIRECTION, DOOR

Grain direction is vertical by default.

GRAIN DIRECTION, DRAWER

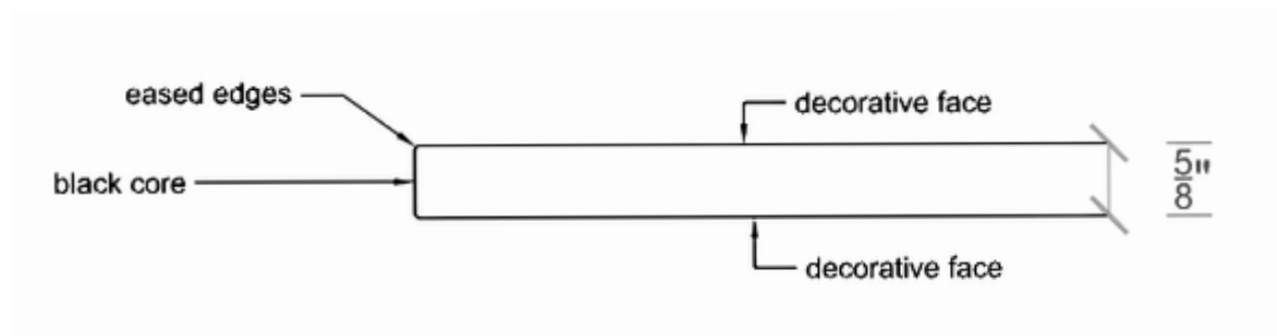
Grain direction is horizontal by default.

FINISHED BACK OF DOOR

Same finish as the front

DOOR STYLE FACTOR

Also applies to all panels and fillers



Sonoma Collection / Royal Walnut



*Sonoma Door / Drawer specifications continue on to the next page.

NEO DOOR

Specifications

AVAILABLE

Brushed Aluminum finish or powder coated
Black available

CONSTRUCTION

Aluminum with either a 1/4" thick Sonoma
or 3/4" thick Accoya insert

MINIMUM/MAXIMUM

DOOR WIDTH

12" / 24"

MINIMUM/MAXIMUM

DOOR HEIGHT

12" / 60"

GRAIN DIRECTION, DOOR

Grain direction is vertical on door panel

GRAIN DIRECTION, DRAWER

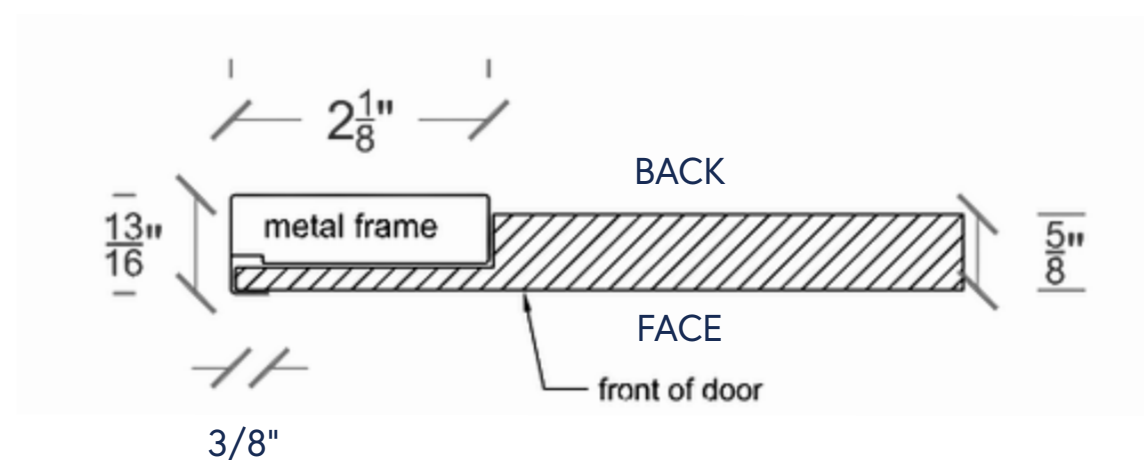
Grain direction is horizontal on
drawers, vertical grain not available.
Top drawer is always 7" high

FINISHED OPTIONS

Neo doors are available with all Windswept
and Sonoma color selections

FINISHED BACK OF DOOR

Windswept back will be base color only,
Sonoma will be same as face

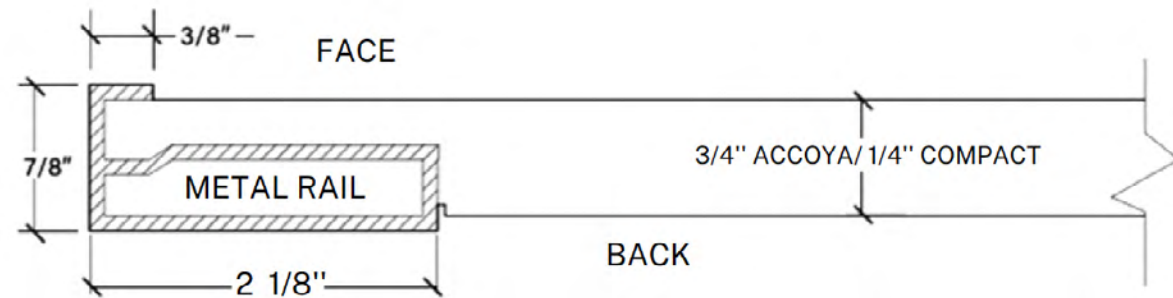


*Sonoma Door / Drawer specifications continue on to the next page.



ADDITIONAL NEO INFORMATION

CROSS SECTION



NEOGRILL FRONTS

NEO Grill fronts will only have the Aluminum frame on the bottom and 2 sides to make it easier to install the insulated jacket.

Grill Cabinet must be a minimum of 6" wider than the Insulated Jacket.

OPUS/SLAB DOOR

Specifications

COLLECTION

Opus

CONSTRUCTION

3/4" One piece Composite Board
WITH Eased EDGE

MINIMUM/MAXIMUM

DOOR WIDTH

9"/24"

MINIMUM/MAXIMUM

DOOR HEIGHT

12"/60"

DRAWER FRONTS

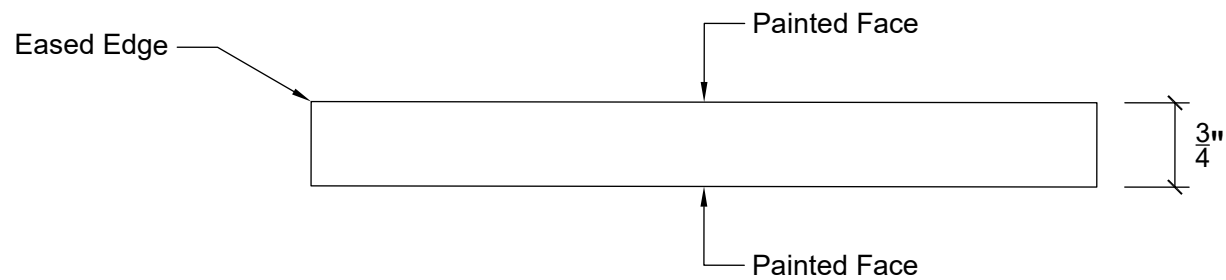
3/4" One piece Composite Board
WITH Eased EDGE

GRAIN DIRECTION

Solid no grain Direction

DESIGN CONSIDERATIONS

Doors painted solid color front and back. Only solid colors are available in this collection, with no glazed finishes.



OPUS/SHAKER DOOR

Specifications

COLLECTION

Opus

CONSTRUCTION

3/4" One piece Composite Board
1/4" Routed Center with
1/4" Beveled inside
profile and eased EDGE

MINIMUM/MAXIMUM

DOOR WIDTH

9"/24"

MINIMUM/MAXIMUM

DOOR HEIGHT

12"/60"

DRAWER FRONTS

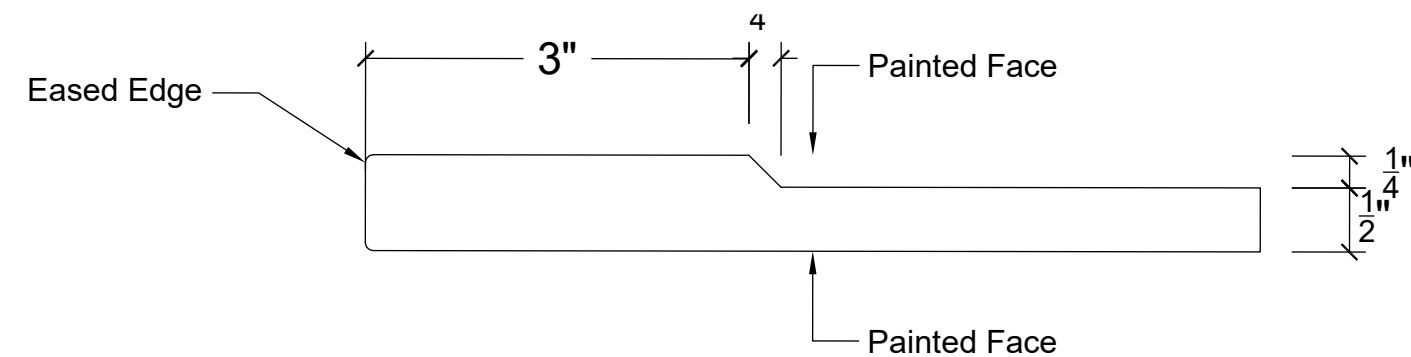
3/4" One piece Composite Board
WITH Eased EDGE

GRAIN DIRECTION

Solid no grain Direction

DESIGN CONSIDERATIONS

Doors painted solid color front and
back. Only solid colors are available in
this collection, with no glazed finishes.

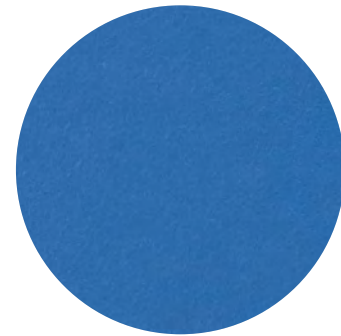


FINISHES

Sonoma Collection / Noce Havana



SONOMA FINISHES



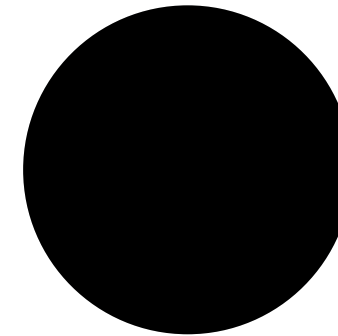
Spa



Seawhite



Avalon Oak



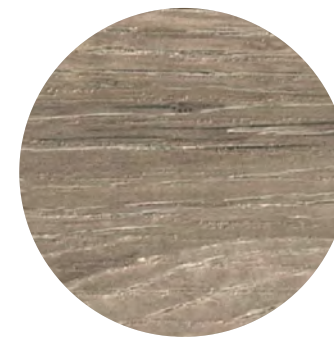
Cinder



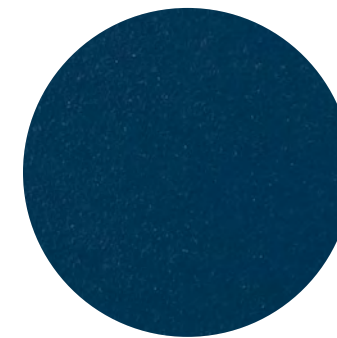
Grey Cedar



Noce Havana



Riverside Oak



Teal



Royal Walnut

HOW IT'S MADE

Layers of sustainability harvested kraft paper are impregnated with thermosetting phenolic resins. The surface decorative finish layers are then applied on both sides and a transparent topcoat is added to the surface layers. This is cured to enhance weather and light protecting properties. The panels are then subject to high heat and pressure to bond the material into a non-porous, homogeneous material that is dense and perfect for outdoor surfaces like our cabinetry.

DESIGN CONSIDERATIONS

Sonoma doors, drawers and panels are available in a sleek, ebony-polished edge, offering a clean, contemporary look. ZähBuilt has proprietary 5/8" (16mm) thick

WINDSWEPT DOOR FINISHES

DESIGN CONSIDERATIONS

Doors painted in White will come standard with a white door back, all other paint colors, stain and glaze or weathered finishes come standard with base color back, regardless of cabinet interior color.



Shaker / Seaside



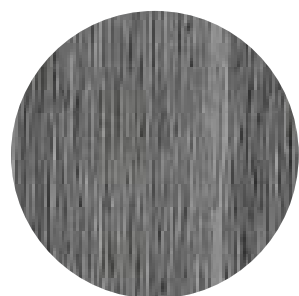
Louver / Sahara



Slab / Storm



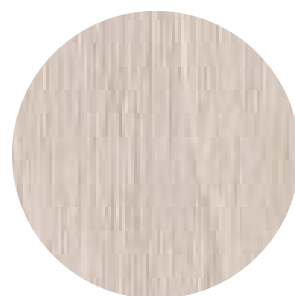
Pillow / Riptide Blue



Cyclone



Seaside



Sand



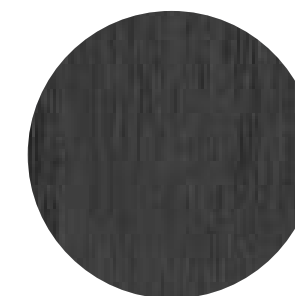
Sahara



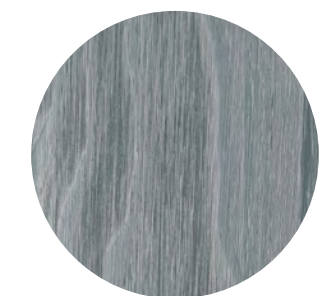
Cocoa Bean



Wave Crest



Storm



Riptide Blue

CUSTOM COLOR OPTIONS

Windswept Custom Color Program



DESIGN CONSIDERATIONS

- Only available in solid colors, no glazes
- Standard selection of solid paint colors
- \$250 NET sample cost for approval is mandatory
- Add 2 weeks to lead time
- Approximate 10% cost increase over standard
- Windswept door cost

Sonoma Custom Color Program



DESIGN CONSIDERATIONS

- Ask your sales rep for current selections and lead time
- Add 8-12 weeks to lead time
- \$2,500 NET cost for custom color
- Approximate 15% cost increase over Sonoma door cost

321-308-3297

SALES@ZAHBUILT.COM

ZAHBUILT.COM



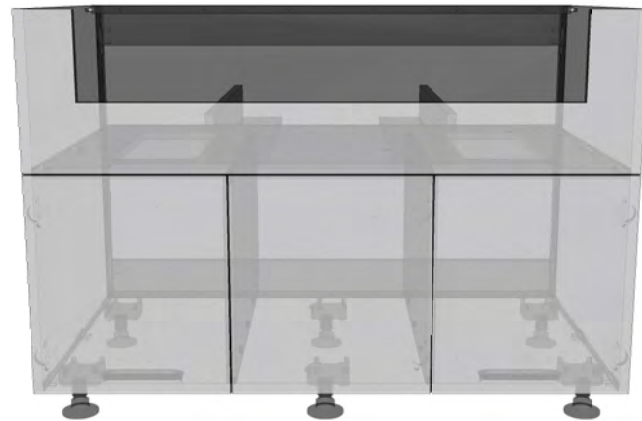
GRILL BASE CABINETS

Windswept Collection / Cyclone



GRILL BASE SPECIFICATIONS

- Grill/side burner bases are available from 18" to 78" wide constructed from 3/4" black LDPE and assembled with dowels and strategic stainless steel screws
- Grill bases are 30 1/2" tall with 4" adjustable plastic leveler legs
- Grill bases have removable/trimmable "L" shaped risers to support the grill Insulated Jacket
- Grill base must be a minimum 3" wider than grill Insulated Jacket, preferably 6" + (must be 6" wider for NEO collection)
- Grill bases are 28" deep as a standard with ventilation grills in decks of cabinet.



LDPE risers are trimmed on site to provide the proper grill height. The stretcher and riser system allows air flow for proper ventilation. Place risers near to/above the partitions.

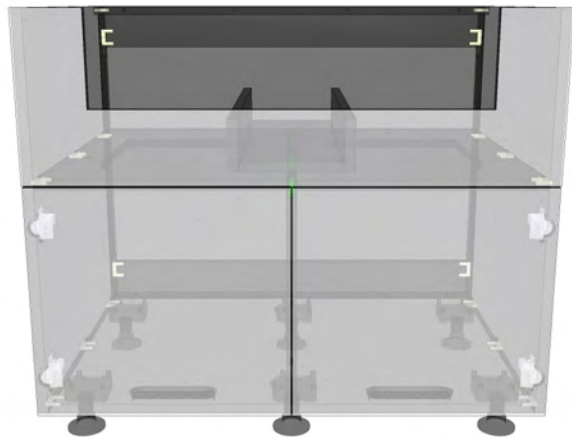
- All grills require an insulation jacket, generally this requires a base cabinet at least 6" wider than the grill
- All grill bases have a 12 1/2" high front that needs to be cut to accommodate the liner dimensions, the final height is determined by the countertop thickness (grill height minus countertop thickness = front cut out)
- Standard propane tanks will slide under the grill due to our patent pending aluminum drop down tray, this tray also provides a gas ventilation
- Cabinet edges are black



Optional Ventilation/propane tank clearance trays are installed into the bottom of all grill base and burner base cabinets in order to prevent potential gas build-up within the cabinets (Patent Pending).

STANDARD GRILL BASE CABINETS

2-DOOR



SKU

GB30-2
GB36-2
GB39-2
GB42-2

DESIGN CONSIDERATIONS

- Cabinet is 28" DEEP
- Front panel is 12 1/2" H
- Panel can be cut on site to fit individual grills
- Doors are 17 3/4" H

PARTITION

- Cabinets 36" W and wider will have a centered vertical partition between the doors

3-DOORS



SKU

GB45-3
GB48-3
GB54-3
GB60-3

DESIGN CONSIDERATIONS

- Cabinet is 28" DEEP
- Front panel is 12 1/2" H
- Panel can be cut on site to fit individual grills
- Doors are 17 3/4" H

PARTITION

- Cabinets 36" W and wider will have a centered vertical partition between the doors

4-DOORS



SKU

GB45-4
GB48-4
GB54-4
GB60-4
GB72-4
GB78-4

DESIGN CONSIDERATIONS

- Cabinet is 28" DEEP
- Front panel is 11 7/8" H
- Panel can be cut on site to fit individual grills
- Doors are 17 3/4" H

PARTITION

- Cabinets will have a partition separating the doors

STANDARD GRILL BASE CABINETS

4 DRAWERS



SKU

GB30-4D	GB48-4D
GB36-4D	GB54-4D
GB39-4D	GB60-4D
GB42-4D	GB72-4D
GB45-4D	GB78-4D

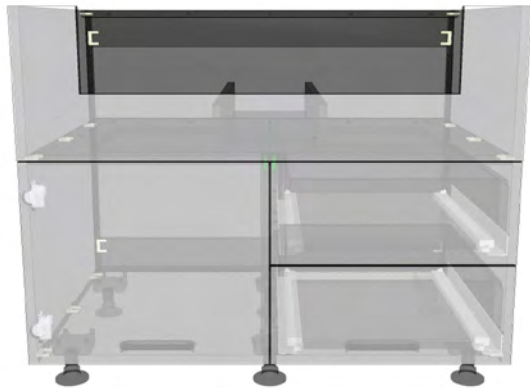
DESIGN CONSIDERATIONS

- Grill base is 28" deep
- Front panel is 12 1/2" high to be cut by installer
- Drawer fronts are 8 3/4" high
- Drawer fronts over 8" can be ordered in a stile and rail configuration for an additional cost

PARTITION

- There is a full depth partition separating the drawers

2 DRAWERS & 1 DOOR



SKU

GBC30-(L,R)	GBC30-(L,R)
GBC36-(L,R)	GBC36-(L,R)
GBC39-(L,R)	GBC39-(L,R)
GBC42-(L,R)	GBC42-(L,R)

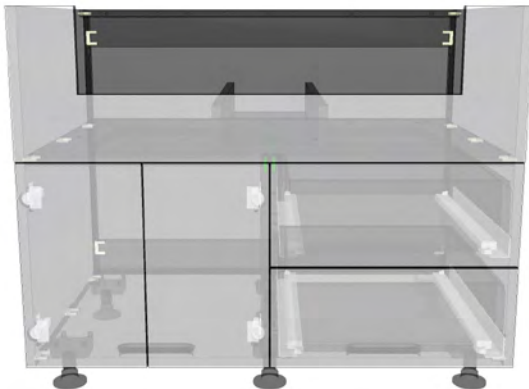
DESIGN CONSIDERATIONS

- Grill base is 28" deep
- Front panel is 12 1/2" high to be cut by installer
- Drawer fronts are 8 3/4" high
- Drawer fronts over 8" can be ordered in a stile and rail configuration for an additional cost

PARTITION

- There is a full depth partition separating the drawers
- The 'R' or 'L' signify what side the drawers are on

2 DRAWERS & 2 DOOR



SKU

GBC48 (L,R)	GBC45-(L,R)
GBC54-(L,R)	GBC54-(L,R)
GBC60-(L,R)	GBC60-(L,R)
GBC72-(L,R)	GBC72-(L,R)
GBC78-(L,R)	GBC78-(L,R)

DESIGN CONSIDERATIONS

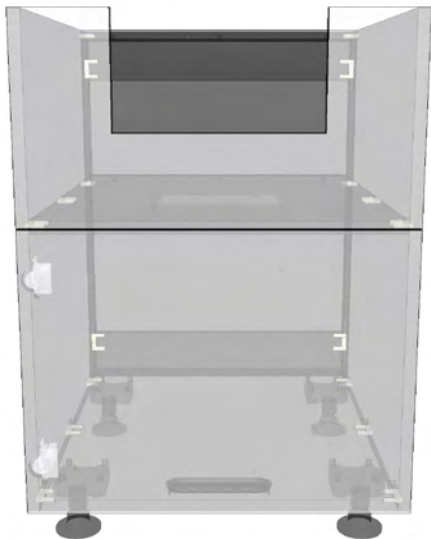
- Grill base is 28" deep
- Front panel is 12 1/2" high to be cut by installer
- Drawer fronts are 8 3/4" high
- Drawer fronts over 8" can be ordered in a stile and rail configuration for an additional cost

PARTITION

- There is a full depth partition separating the drawers
- The 'R' or 'L' signify what side the drawers are on

STANDARD GRILL BASE CABINETS

1 DOOR /
BURNER
BASE



SKU

- BB15
- BB18
- BB21
- BB24

DESIGN CONSIDERATIONS

- Burner base is 28" deep
- Front panel is 12 1/2" high to be cut by installer
- Sonoma BB24 will have two doors due to weight limitations.

1 DRAWER/
BURNER
BASE



SKU

- BB15-1D
- BB18-1D
- BB21-1D
- BB24-1D

DESIGN CONSIDERATIONS

- Burner base is 28" deep
- Front panel is 12 1/2" high to be cut by installer
- Drawer front is 17 3/4" high
- Drawer box is 12" H x 20" D
- Drawer fronts over 8" can be ordered in a stile and rail configuration for an additional cost

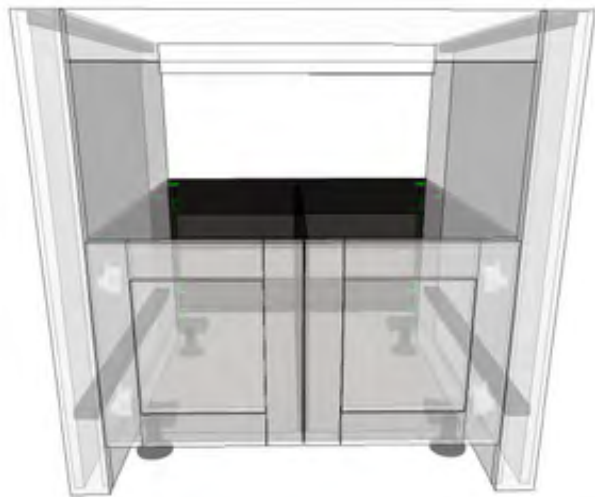
CERAMIC GRILL CABINETS



Sonoma Collection / Avalon Oak

STANDARD GRILL BASE CABINETS

WINDSWEPT CERAMIC GRILL CABINETS



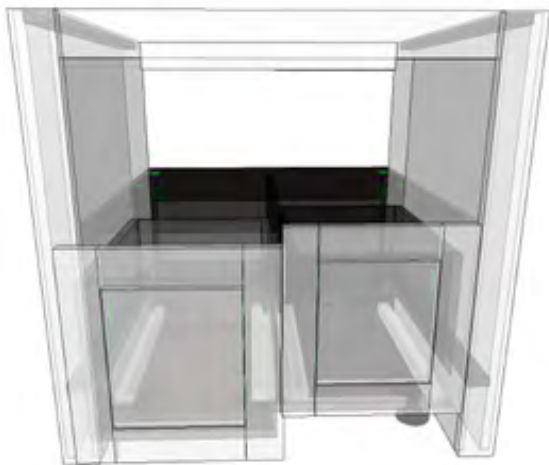
SKU

WCG34.5
WCG30.5
DOOR

DESIGN CONSIDERATIONS

- End panels are 30" deep and 3" wide
- For suspended application, see Specialty low base
- Overall H is 34 1/2" or 30 1/2"
- Overall W is 36"

- Inside dimension is 30" W
- There is a vertical center partition
- A non-combustible surface (stone) must be installed on the resting platform



SKU

WCGD34.5
WCGD30.5
DRAWER

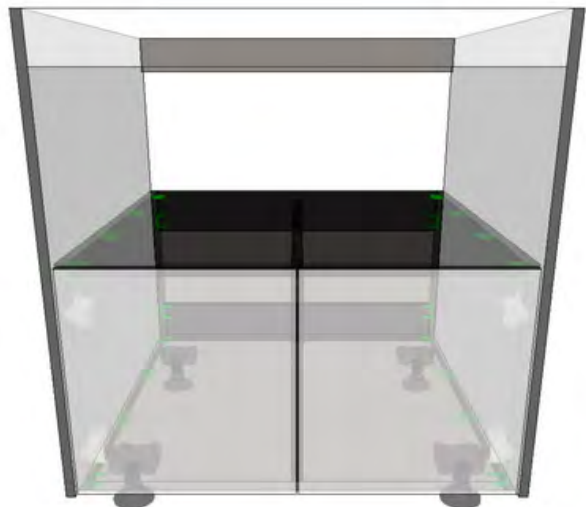
DESIGN CONSIDERATIONS

- End panels are 30" deep and 3" wide
- For suspended application, see Specialty low base
- Overall H is 34 1/2" or 30 1/2"
- Overall W is 36"

- Inside dimension is 30" W
- There is a vertical center partition
- Drawer box is 10" high
- A non-combustible surface (stone) must be installed on the resting platform

STANDARD GRILL BASE CABINETS

SONOMA CERAMIC GRILL CABINETS



SKU

CCG34.5
CCG30.5
DOOR

DESIGN CONSIDERATIONS

- End panels are 30" deep and 5/8" wide
- For suspended application, see Specialty low base
- Optional mitered matching front edges available
- Overall H is 34 1/2" or 30 1/2"

- Overall W is 36"
- Inside dimension is 34 3/4" W
- There is a vertical center partition
- A non-combustible surface (stone) must be installed on the resting platform



SKU

CCGD34.5
CCGD30.5
DRAWER

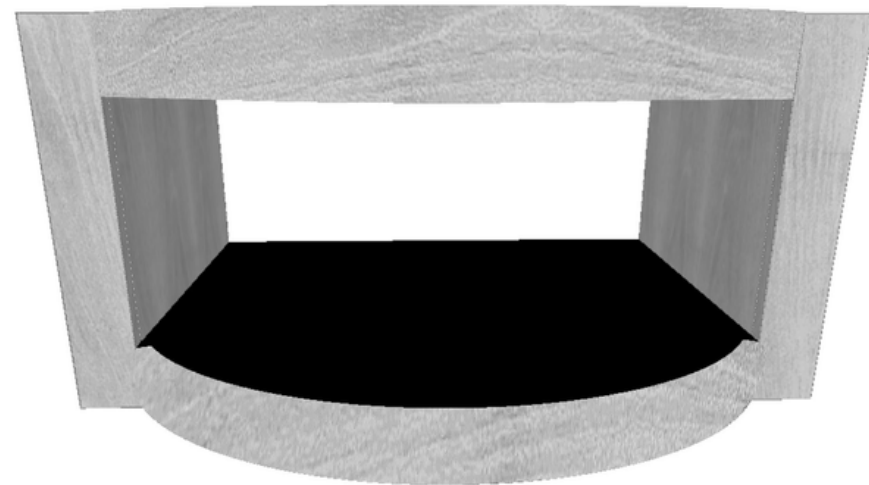
DESIGN CONSIDERATIONS

- End panels are 30" deep and 5/8" wide
- For suspended application, see Specialty low base
- Optional mitered matching front edges available
- Overall H is 34 1/2" or 30 1/2"

- Overall W is 36"
- Inside dimension is 34 3/4" W
- There is a vertical center partition
- Drawer box is 10" high
- A non-combustible surface (stone) must be installed on the resting platform

BOW FRONT CERAMIC GRILL CABINETS

WINDSWEPT SUSPENDED BOW FRONT



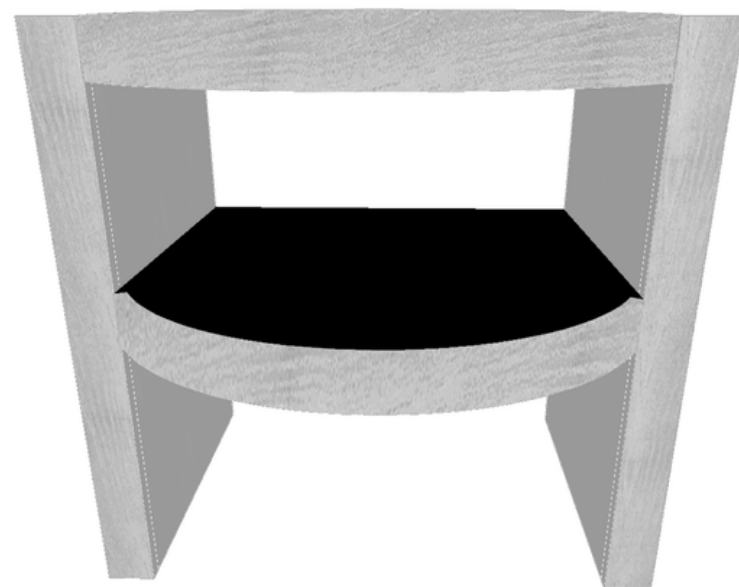
SKU

WSBF-20

DESIGN CONSIDERATIONS

- End panels are 25" deep x 3" wide
- Overall height of suspended cabinet is 20", including 2 3/4" top and bottom rails
- Overall height of free standing unit is 34 1/4"
- Overall width is 36"
- Inside dimension is 30" wide
- Depth to end of radius is 34"
- Radius of arch is approx. 27" outside
- A non-combustible surface (stone) must be installed on the resting platform

WINDSWEPT FREE STANDING BOW FRONT



SKU

WFSBF- 34.5





BASE CABINETS

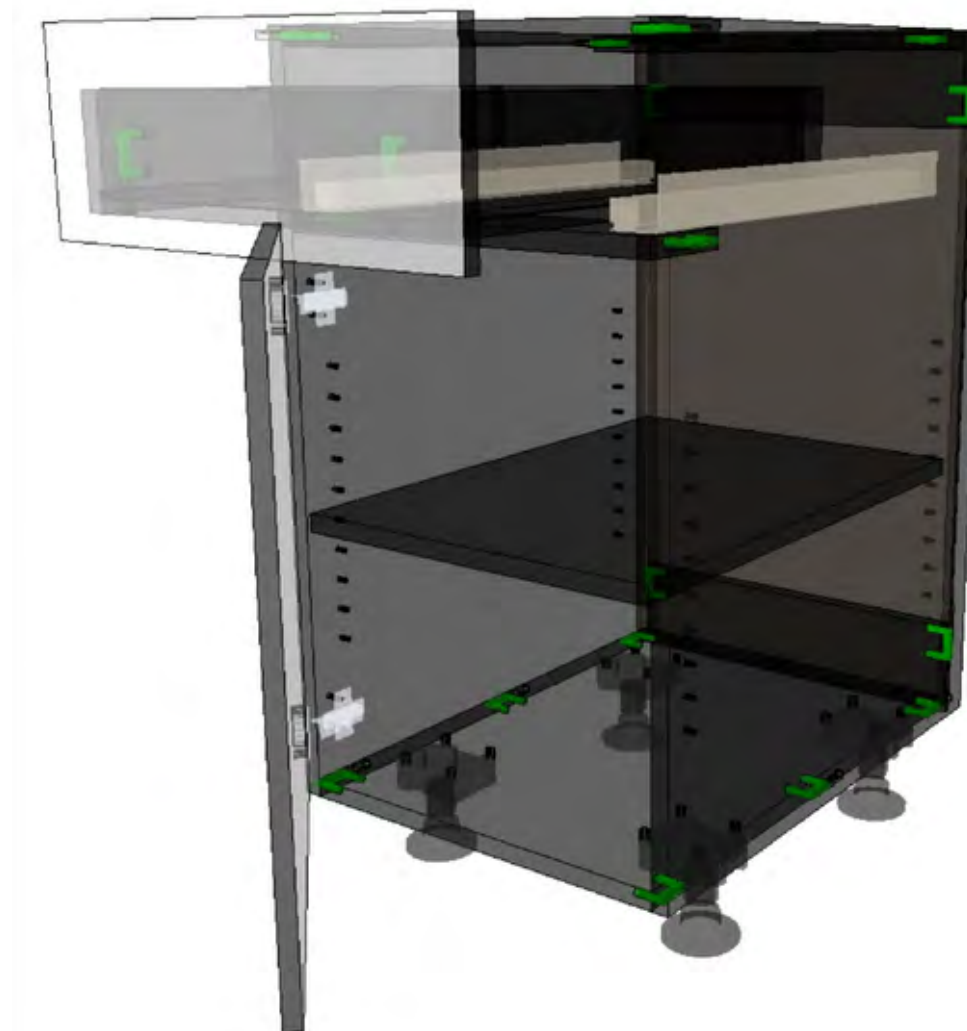
Windswept Collection / Storm



STANDARD BASE CABINET SPECIFICATIONS

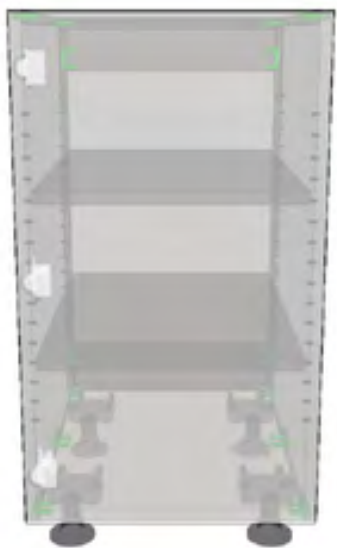
All ZähBuilt boxes are constructed from 3/4" black LDPE panels, making them weather resistant.

- Assembled with Lockdowels
- Full Access, frameless construction
- Standard depth is 24" deep, can be ordered 28" deep.
Drawers remain 21" deep
- 1/4" LDPE thick cabinet backs with 4" nailers top and bottom
- Full depth adjustable shelves
- 110° soft-close stainless steel concealed hinges
- Finished ends can be purchased loose or factory applied
- Undermount full extension 20" slides, concealed by drawer sides and treated with corrosion blocker
- Drawer boxes are 3/4" LDPE with 1/4" bottoms. Assembled with lockdowels
- Standard base cabinets are 30 1/2" H plus an adjustable leg leveler (standard toe kick is 4")



STANDARD BASE CABINET SPECIFICATIONS

FULL HEIGHT DOOR



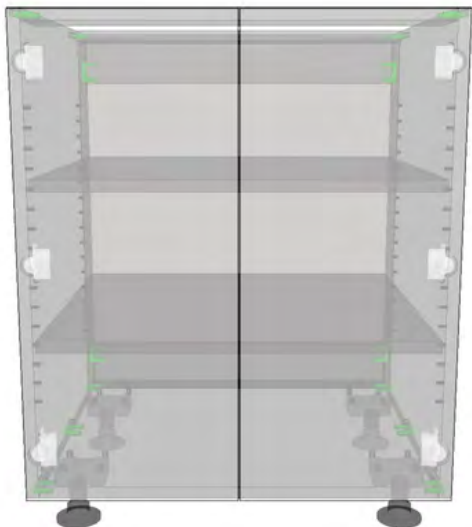
SKU

BFH12
BFH15
BFH18
BFH21

DESIGN CONSIDERATIONS

- 24" deep
- 2 adjustable shelves
- Can be order 28" deep
- 'L' or 'R' signifies door hinge location

2 FULL HEIGHT DOORS



SKU

BFH24-2
BFH27-2
BFH30-2
BFH3302
BFH36-2

DESIGN CONSIDERATIONS

- 24" deep
- 2 adjustable shelves
- Can be order 28" deep

DRAWER OVER DOOR



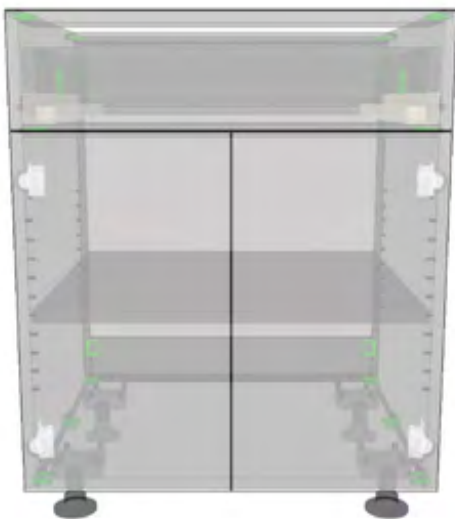
SKU

B12
B15
B18
B21

DESIGN CONSIDERATIONS

- 24" deep
- Top drawer face is 7" high slab
- Drawer box is 4" x 21" deep
- 1 adjustable shelf
- Can be ordered 28" deep, drawer box will remain 21" deep

DRAWER OVER DOORS



SKU

B24-2
B27-2
B30-2
B33-2
B36-2

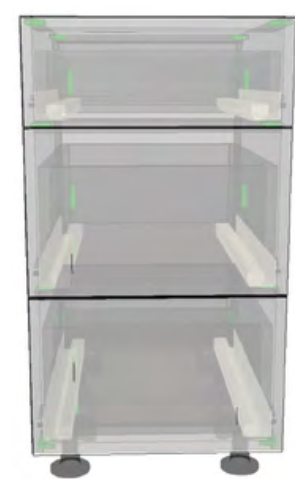
DESIGN CONSIDERATIONS

- 24" deep
- Top drawer face is 7" high slab
- Drawer box is 4" x 21" deep 1 adjustable shelf
- Can be ordered 28" deep, drawer box will remain 21" deep



DRAWER BASE CABINETS

3 DRAWER



SKU

B3D12
B3D15
B3D18
B3D21
B3D24
B3D27
B3D30
B3D33
B3D36

DESIGN SPECIFICATIONS

- 24" deep cabinet
- Top drawer face is 7" high slab
- Top drawer box is 4" high
- Drawer Face 2 and 3 are 11 1/2" high
- Drawer Boxes 2 and 3 are 8"high
- Can be ordered 28" deep, drawer box will remain 21" deep
- Drawer fronts over 8" can be ordered in a stile and rail configuration for an additional cost

2 DRAWER



SKU

B2D12
B2D18
B2D21
B2D24

DESIGN SPECIFICATIONS

- 24" deep cabinet
- Both Drawer faces are 15" high
- Both drawer boxes are 10" high
- Can be ordered 28" deep, drawer box will remain 21" deep
- Drawer fronts over 8" can be ordered in a stile and rail configuration for an additional cost

ROLL OUTS



SKU

RO4
RO8

DESIGN SPECIFICATIONS

- 21" deep box
- 4" or 8" deep
- Full extension under mount slides
- Slides are behind front
- 1" spacer on sides

SINK BASE CABINETS

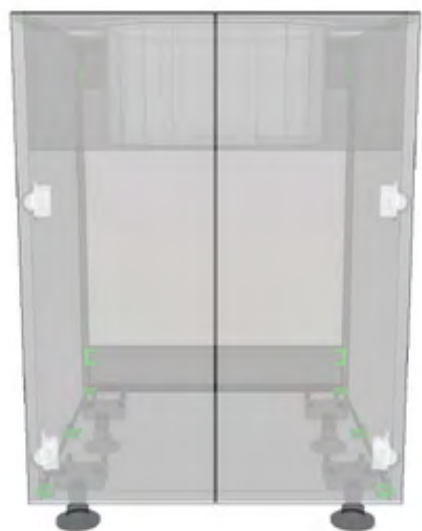
1 FULL HEIGHT DOOR



SKU

SBFH18 (L,R)
SBFH21 (L,R)

2 FULL HEIGHT DOORS



SKU

SBFH24
SBFH27
SBFH30
SBFH33
SBFH36

DESIGN CONSIDERATIONS

- (L,R) refers to door hinge location

SINK SKIRT

- 4" sink skirt including top stretcher

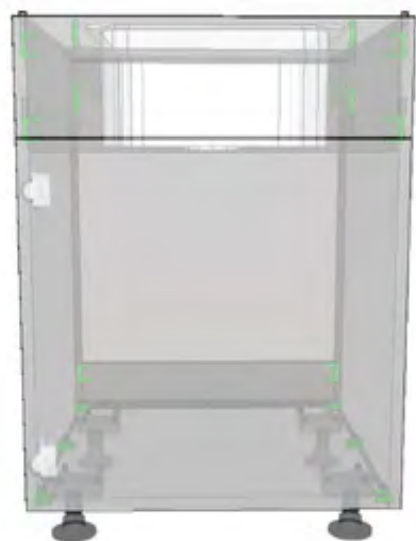
PARTITIONS

- Sink cabinets have no interior partition (unless requested)

SHELVES

- Sink cabinets have no shelves

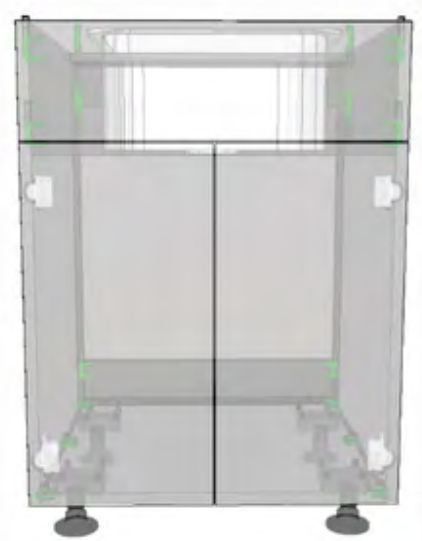
1 DOOR FALSE FRONT



SKU

SBFF18 (L,R)
SBFF21 (L,R)

2 DOOR FALSE FRONT



SKU

SBFF24
SBFF27
SBFF30
SBFF33
SBFF36

DESIGN CONSIDERATIONS

- (L,R) refers to door hinge location

SINK SKIRT

- 8 1/4" sink skirt including top stretcher

PARTITIONS

- Sink cabinets have no interior partition

SHELVES

- Sink cabinets have no shelves
- 7" high slab FF

SPECIALTY BASE CABINETS

SPICE PULLOUT



SKU

BSP9

DESIGN CONSIDERATIONS

- Only available 9" wide
- 1 fixed shelf on center
- 2" lip on both sides of fixed shelves

HANGING CUTLERY PULLOUT



SKU

BGA9

DESIGN CONSIDERATIONS

- Only available 9" wide
- Approx. 26" clear inside height
- 5 stainless steel hanging hooks

LOW HEIGHT BASE DOORS



SKU

LBH24
LBH30
LBH36

DESIGN CONSIDERATIONS

- Cabinet is 12" high plus 4" adjustable legs
- Has a center partition
- Can support a ceramic grill
- Standard is 24" deep

LOW HEIGHT BASE DRAWERS



SKU

LHBD24
LHBD30
LHBD36

DESIGN CONSIDERATIONS

- Cabinet is 12" high plus 4" legs
- Drawers are 8" high
- Has a center partition
- Can support a ceramic grill
- Standard is 24" deep
drawer fronts over 8" can be ordered in a stile and rail configuration for an additional cost

SPECIALTY BASE CABINETS

WALL DEPTH BASE CABINET 1 DOOR

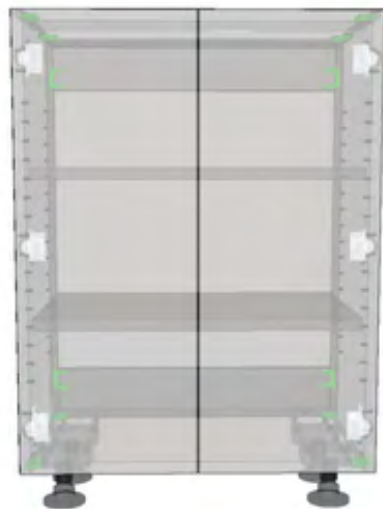


SKU

WDB12-(12,15,18)
WDB15-(12,15,18)
WDB18-(12,15,18)
WDB21-(12,15,18)

- DESIGN CONSIDERATIONS**
- Please note 12", 15", or 18" depth
 - Cabinet is 30 1/2" high plus 4" levelers
 - 2 adjustable shelves

WALL DEPTH BASE CABINET 1 DOOR



SKU

WDB24-(12,15,18)
WDB27-(12,15,18)
WDB30-(12,15,18)
WDB33-(12,15,18)
WDB36-(12,15,18)

- DESIGN CONSIDERATIONS**
- Please note 12", 15", or 18" depth
 - Cabinet is 30 1/2" high plus 4" levelers
 - 2 adjustable shelves

WASTE BIN CABINETS

FULL HEIGHT WASTE BIN



SKU

FHWB12
FHWB15
FHWB18
FHWB21

DESIGN CONSIDERATIONS

- Trash bin not included
- Cabinet has a 12" high roll out attached to the front allowing for a 26" high bin
- The 18" and 21" wide will accommodate 2 trash bins

FULL HEIGHT WASTE BIN WITH DRAWER



SKU

BWB12
BWB15
BWB18
BWB21

DESIGN CONSIDERATIONS

- Trash bin not included
- Drawer front is 7" high
- Cabinet has as 12" high roll out attached to the front allowing for a 18" high bin
- The 18" and 21" wide will accommodate 2 trash bins

WASTE BIN CABINETS & GALLEY SINK CAB

FULL HEIGHT BLIND CORNER



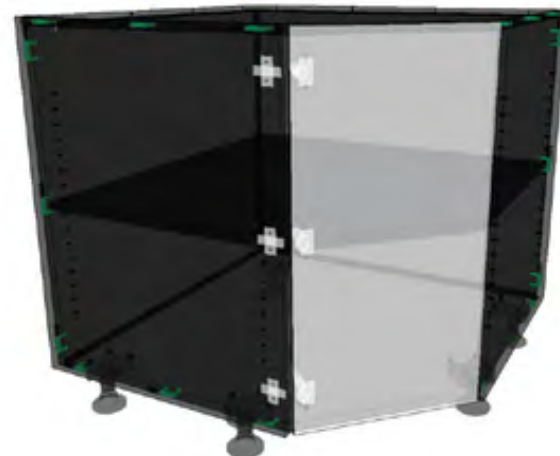
SKU

BFH42 (L,R)

DESIGN CONSIDERATIONS

- (L,R) refers to door hinge location
- Left side hinge is standard
- 42" W cabinet has a 14 7/8" W door
- Includes a 7" W slab filler where corner cabinet joint perpendicular cabinets
- 1 adjustable shelf

45 DEGREE CORNER BASE



SKU

DCC3636 (L,R)

DESIGN CONSIDERATIONS

- Cabinet is 36" x 36"
- Door is 16" W x 30 1/4" H
- (L,R) refers to door hinge location
- 1 adjustable shelf

GALLEY SINK CAB



SKU

GS48 (L,R)

GS72(L,R)

DESIGN CONSIDERATIONS

- Cabinet is 28" deep
- Top false front is 7" high
- Drawers 2 & 3 are 11 1/2" high
- Specify left or right for drawers
- The side opposite of the drawer is open under for plumbing clearance
- Drawer fronts over 8" can be ordered in a stile and rail configuration for an additional cost

WALL CABINETS



Sonoma Collection / Sea White

STANDARD WALL CABINET SPECIFICATIONS

All ZähBuilt boxes are constructed from 3/4 black LDPE

- Full access, frameless construction
- 1/4" LDPE thick cabinet backs with 4" nailers top and bottom
- Use washers with stainless steel screws when hanging wall cabinets
- Wall cabinets are 12" deep and come with full depth 3/4" thick LDPE adjustable shelves
- Stainless steel, adjustable soft close hinges
- Finished ends, crown and light rails available as accessories
- We recommend a light rail for cabinets over 21" wide
- 11" Clear inside D



STANDARD WALL CABINETS

1 DOOR CABINET



SKU

18" H
W1218(L,R)
W1518(L,R)
W1818(L,R)
W2118(L,R)

SKU

24" H
W1224(L,R)
W1524(L,R)
W1824(L,R)
W2124(L,R)

SKU

30" H
W1230(L,R)
W1530(L,R)
W1830(L,R)
W2130(L,R)

SKU

36" H
W1236(L,R)
W1536(L,R)
W1836(L,R)
W2136(L,R)

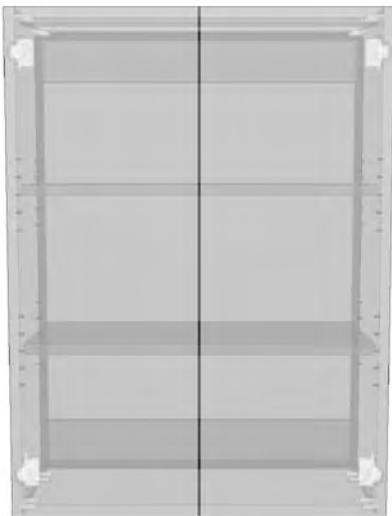
DESIGN CONSIDERATIONS

- (L,R) refers to door hinge location

SHELVES

- 18" H - no shelves
- 24" H cabinets - 1 adjustable shelf
- 30" & 36" H cabinets - 2 adjustable shelves
- 13" deep outside, 11" clear inside

2 DOOR CABINET



SKU

18" H
W2418
W2718
W3018
W3318
W3618

SKU

24" H
W2424
W2724
W3024
W3324
W3624

SKU

30" H
W2730
W3030
W3330
W3630

SKU

36" H
W2436
W3036
W3636

DESIGN CONSIDERATIONS

- 18" H - no shelves
- 24" H cabinets - 1 adjustable shelf
- 30" & 36" H cabinets - 2 adjustable shelves
- 13" deep outside, 11" clear inside



TALL CABINETS

Sonoma Collection / Alumina Special Order Color



TALL CABINETS

2-DOOR



SKU

T1294-12(L,R)
T1294-24(L,R)
T1594-12(L,R)
T1594-24(L,R)
T1894-12(L,R)
T2194-12(L,R)
T2194-24(L,R)

4-DOOR



SKU

T2494-12
T2494-24
T2794-12
T2794-24
T3094-12
T3094-24

DESIGN CONSIDERATIONS

- Standard height is 90 1/2" plus 4" levelers
- Top door is always 30" high
- Bottom door will vary with height change
- Fixed shelf between doors
- 6 adjustable shelves total
- Note depth (12" or 24") on order
- Note door swing on 2 door cabinet



PANELS, FILLERS & ACCESSORIES



Sonoma Collection / Sea White

DECORATIVE APPLIED PANELS



AP (WIDTH X HEIGHT X STYLE X FINISH)

DESIGN CONSIDERATIONS

- Only available in custom sizes
- Reference the specifications section for additional information and limitations
- Appliance panels, please input the exact size required
- Note door style, color, width and height

END PANELS

WINDSWEPT END/ BACK PANEL



SKU

WEP1536
WEP1595
WEP2636

DESIGN CONSIDERATIONS

- All 'end panels' are shipped loose
- All 'end panels' are a slab (not decorative)
- Windswept is 3/4" thick
- Sonoma panels are 5/8" thick
- Standard Sonoma have an ebony edge
- Sonoma can be ordered with a matching front edge (add cost)
- Custom sizes available at additional cost
- Maximum size is 44" x 44" Sonoma
- If size exceeds maximum, need to order a 'back or tall panel'
- Windswept panels are profiled on 1 long edge only
- Windswept back panels maximum width is 36" max height is 48"

SONOMA END PANEL



SKU

SEP2636
SEP3036
SEP1430
SEP1436
SEP1495
SEP2695

SONOMA BOX COLUMNS

SONOMA BOX COLUMN SHALLOW



SKU

SBCS3X634.5
SBCS3X636
SBCS3X694.5

DESIGN CONSIDERATIONS

- 7 1/4" both sides
- 36" high for scribing as needed
- 3" wide
- Matching mitered edge available for an added cost

SONOMA BOX COLUMN 1 FULL SIDE

Ebony Edge Shown



SKU

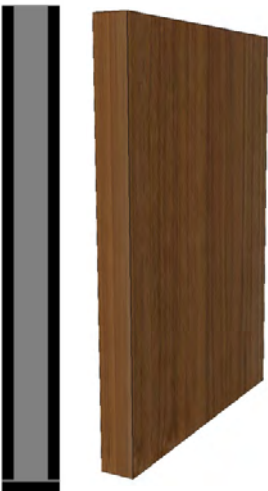
SBC1S2634.5
SBC1S2636
SBC1S2694.5
SBC1S3034.5
SBC13036
SBC13094.5

DESIGN CONSIDERATIONS

- 7 1/4" return 1 side
- 1 side full depth (26" or 30")
- 36" high is for scribing
- 3" wide
- Matching mitered edge available for an added cost

SONOMA BOX COLUMN 3 SIDES

Mitred Edge Shown



SKU

SBC3S2634.5
SBC3S2636
SBC3S2694.5
SBC3S3034.5
SBC3S3036
SBC3S3094.5

DESIGN CONSIDERATIONS

- Both sides full depth (26" or 30")
- 36" high is for scribing
- 3" wide
- Matching mitered edge available
- Custom sizing available at additional cost configuration for an additional cost

WINDSWEPT PILASTERS

WINDSWEPT BOX COLUMN SHALLOW



SKU

WBCS3X636
WBCS3X694.5

DESIGN CONSIDERATIONS

- 7" both sides
- 36" high for scribing as needed
- 3" wide

WINDSWEPT BOX COLUMN 1 FULL SIDE



SKU

WBC2S2636
WBC2S2694.5
WBC2S3036
WBC2S3094.5

DESIGN CONSIDERATIONS

- 3" face x 7" one side x full depth 1 side

WINDSWEPT BOX COLUMN 3 SIDES



SKU

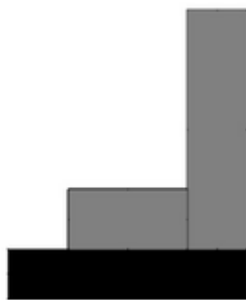
WBC3S2636
WBC3S2694.5
WBC3S3036
WBC3S3094.5

DESIGN CONSIDERATIONS

- Finished on 3" w face, side return and long inside edge
- 3" face with both sides finished full depth

FILLERS & FLOATING SHELVES

SONOMA FILLER WITH BACKER



SKU

SF336
SF394.5
SF5.536
SF5.594.5

DESIGN CONSIDERATIONS

- 7" both sides
- 36" high for scribing as needed
- 3" wide

WINDSWEPT FILLER WITH BACKER



SKU

WF336
WF394.5
WF5.536
WF5.594.5

DESIGN CONSIDERATIONS

- 3" face x 7" one side x full depth 1 side

WINDSWEPT FLOATING SHELF



SKU

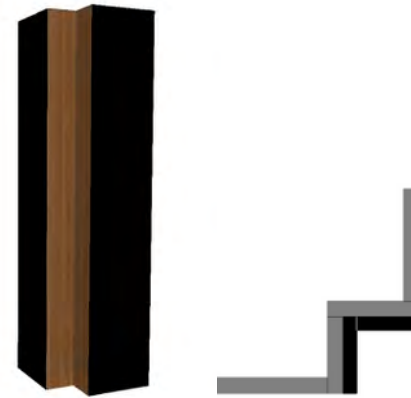
WFS24(L,R,B,N) WFS54(L,R,B,N)
WFS30(L,R,B,N) WFS60(L,R,B,N)
WFS36(L,R,B,N) WFS66(L,R,B,N)
WFS42(L,R,B,N) WFS72(L,R,B,N)
WFS48(L,R,B,N)

DESIGN CONSIDERATIONS

- Finished on 3" w face, side return and long inside edge
- 3" face with both sides finished full depth

CORNER FILLERS

3X3 SONOMA CORNER FILLER



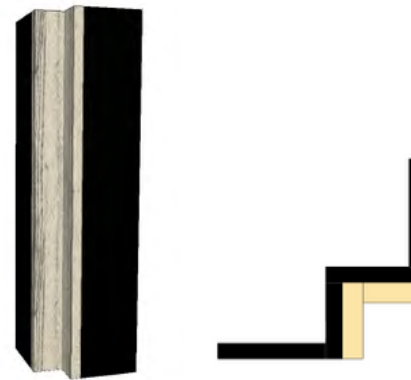
SKU

SCF3336

DESIGN CONSIDERATIONS

- 3" x 3" inside filler
- Overall 9 5/8" x 9 5/8" x 36" high
- LDPE back filler

3X3 WINDSWEPT CORNER FILLER



SKU

WCF3336

DESIGN CONSIDERATIONS

- 3" x 3" inside filler
- Overall 10" x 10" x 36"
- LDPE back filler

APPLIANCE PILASTER



SKU

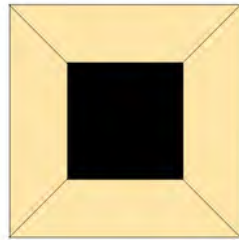
WCF3336

DESIGN CONSIDERATIONS

- Used to separate under counter appliances and support counter top
- LDPE back structure
- Specify 24" or 28" deep
- Available 3" or 6" wide
- Comes with front that matches door/drawer
- Standard height is 36"

POSTS

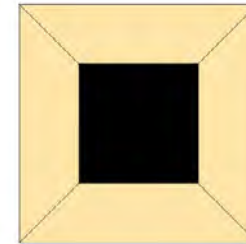
WINDSWEPT POST 3"



SKU

WP336

WINDSWEPT POST 6"



SKU

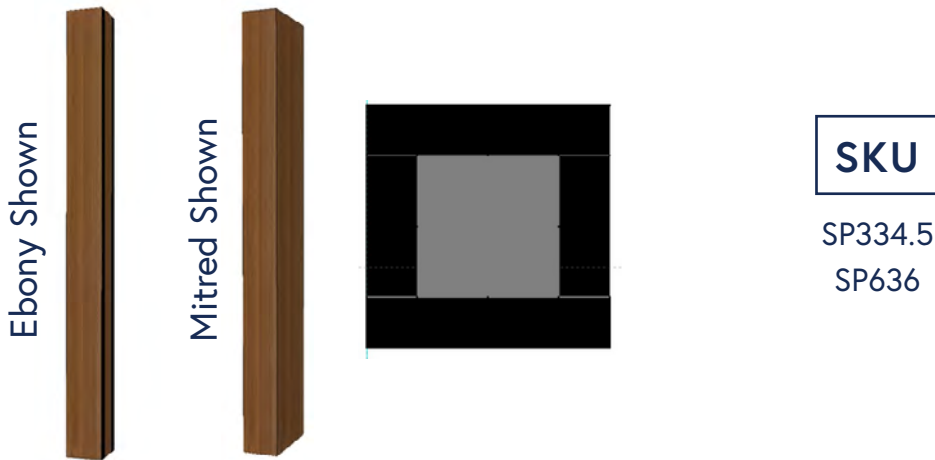
WP636
Actual Net Size
is 5 1/2" Square

DESIGN CONSIDERATIONS

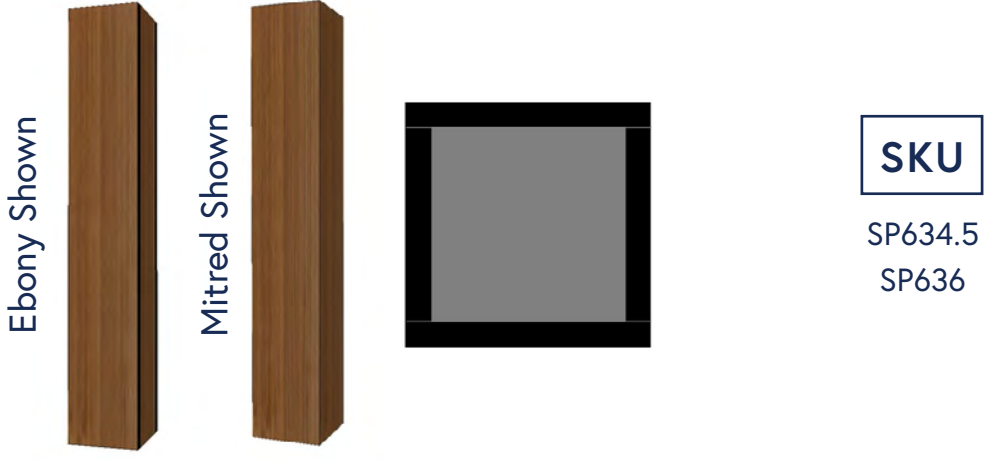
- We define a post as having 4 finished sides
- 36" high
- 3/4" thick material
- Windswept standard is mitered all sides
- 6" post is 5 1/2" square

POSTS

SONOMA POST 3"



SONOMA POST 6"



DESIGN CONSIDERATIONS

- We define a post as having 4 finished sides
- Available 34 1/2" or 36" high
- Sonoma standard has 4 ebony edges
- Sonoma can be mitered all sides for additional cost

LDPE PANELS & TOE PLATES

BLACK LDPE



SKU

LDPE2424 LDPE3696
LDPE2448 LDPE4448
LDPE2496 LDPE4896
LDPE3648

DESIGN CONSIDERATIONS

- 3/4" thick LDPE
- All edges unfinished

WINDSWEPT TOE PLATE



SKU

WTP

DESIGN CONSIDERATIONS

- 94" maximum standard length
- 5 1/2" standard height
- 5/8" thick
- Windswept primed all sides
- Finished color 1 face

SONOMA TOE PLATE



SKU

STP

DESIGN CONSIDERATIONS

- 94" maximum standard length
- 5 1/2" standard height
- 5/8" thick
- Windswept primed all sides
- Finished color 1 face
- Sonoma has 2 faces, ebony 2 edges



PULLS & ACCESSORIES

1" KNOB



SKU

SSK
SSB

7" PULL



SKU

SSP
SSPB

DESIGN CONSIDERATIONS

- Hardware is 304 stainless Powder coated clear or Black
- ZähBuilt hardware is not drilled or mounted on doors and drawers.

DOOR CAM LOCKS



SKU

CAMLOCK

DESIGN CONSIDERATIONS

- Locks are keyed alike
- Contact your rep for installed lock pricing

TOUCH UP KIT



SKU

TUK

DESIGN CONSIDERATIONS

- Only available in base colors
- Order individually by color



ACCESSORIES

LEVELER SPACER



SKU

LS1

DESIGN CONSIDERATIONS

- Adds 3/8" of Height per Spacer
- Can use up to 3

LEVELER INSERT



SKU

LL3
LL7

DESIGN CONSIDERATIONS

- Modifies base cabinet heights from the stock 4" leg
- Standard leg adjusts from 3 3/4" to 5"
- LL3 adjusts from 2 1/2" to 4"
- LS7 adjusts from 6 3/4" to 7 3/4"

LEVELER ADJUSTMENT TOOL



SKU

LAT

DESIGN CONSIDERATIONS

- Used to adjust levelers during install

DEALER SALES TOOLS

DEALER MINI BASE



SKU

DMB

DESIGN CONSIDERATIONS

- Cabinet is 13" W x 23" H x 13" D + toe
- Specify brushed stainless or black pull
- Color and finish is random, allow 4-6 weeks for requested finished

WINDSWEPT SAMPLE BLOCKS



SKU

WSB

DESIGN CONSIDERATIONS

- 6 blocks 2 3/4" W x 6" long
- Finished 1 edge 1 face

SONOMA SAMPLE BLOCKS



SKU

CSB

DESIGN CONSIDERATIONS

- 6" x 6" x 5/8" thick blocks
- Includes stand

DEALER SAMPLE DOOR



SKU

DSD

DESIGN CONSIDERATIONS

- Standard sample doors is Windswept White
- 12 3/4" W x 15 3/4" high
- Allow 2 weeks lead time for colors other than white

WINDSWEPT MOULDINGS



ACCOYA®

A new way of thinking about wood



PERFORMANCE

Excels in every way



WARRANTY



HIGHLY
STABLE



HIGHLY
DURABLE

FINISH

Beautifully versatile



IDEAL FOR
COATING



LOW
MAINTENANCE



NATURAL
WOOD

SUSTAINABILITY

World-changing environmental credentials



SUSTAINABLY
SOURCED



NON TOXIC



100%
RECYCLABLE

Accoya turns everything you know about wood on its head. Through a revolutionary process called acetylation, it modifies wood to give it properties above and beyond the very best hardwoods - and in many cases, aluminum and PVC.

Highly durable and stable, Accoya withstands the test of any climate.

The warranty is a testament to the fact you will enjoy your Accoya wood for years to come.



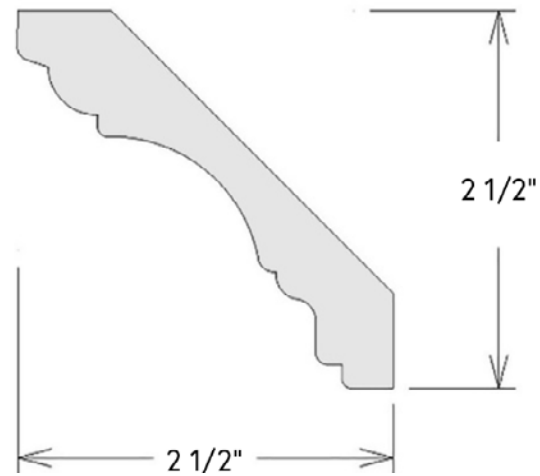
To learn more visit:

[ACCOYA.COM](https://www.accoya.com)



Copyright © Accsys Technologies 2024. Accsys Technologies is a trading name of Titan Wood Limited. Accoya® and the Trimarque Device are registered trademarks owned by Titan Wood Limited and may not be used or reproduced without written permission.

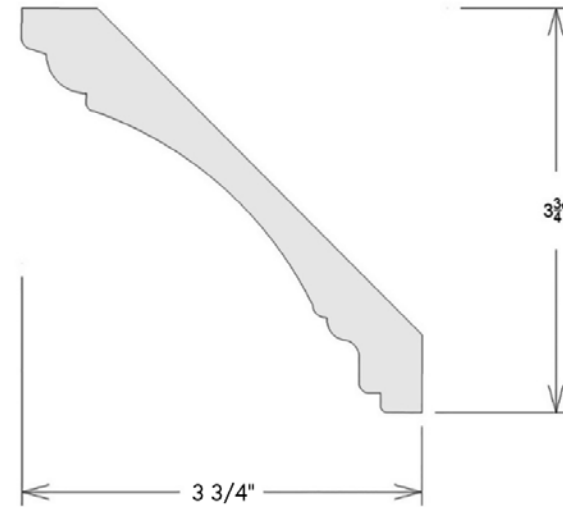
WINDSWEPT CROWN



SKU

WSC71

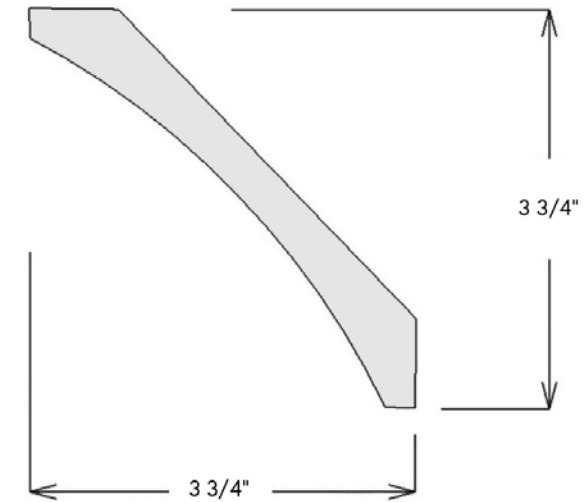
Net width is 3 1/2"W



SKU

WSC50

Net width is 5 1/4" W



SKU

WSC103

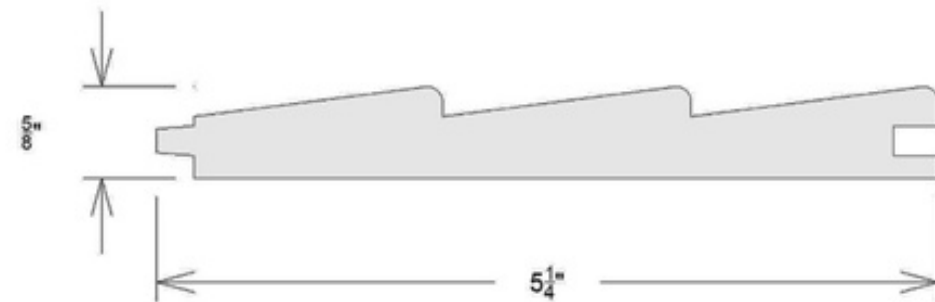
Net width is 5 1/4" W

DESIGN CONSIDERATIONS

- If a nailer is needed please order Flat Stock or Base
- 94" maximum standard length
- Primed all sides
- Finished color on all exposed faces

WINDSWEPT CROWN

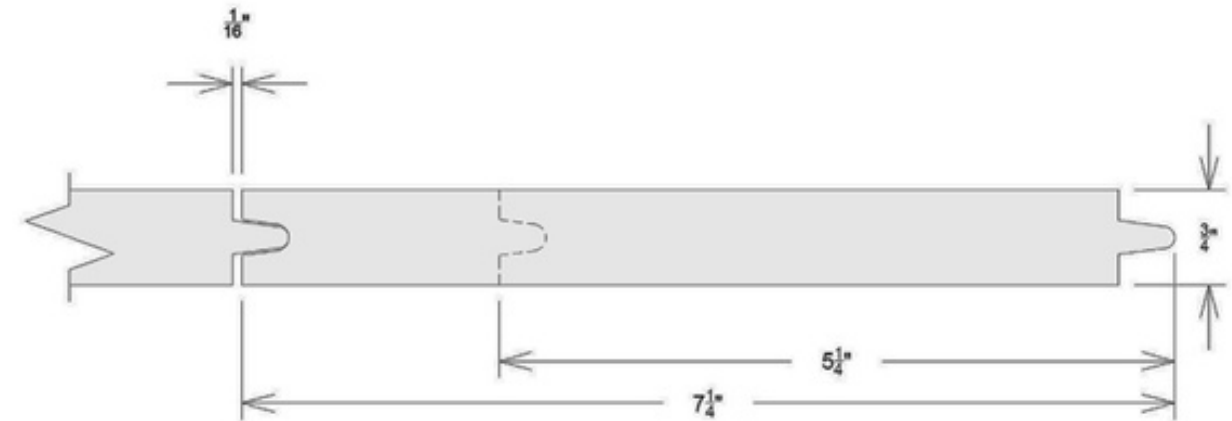
ZAH DOOR LOUVER



SKU

WSZL

NICKLE JOINT

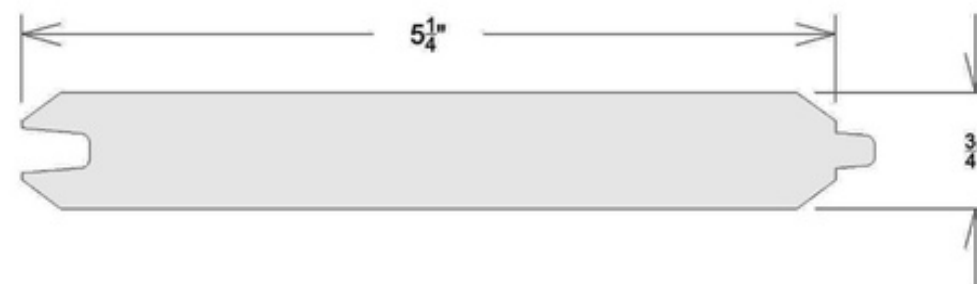


SKU

WSNJ5.25

WSNJ7.25

"V" JOINT MISC 007 (5 1/4" & 7 1/4")



SKU

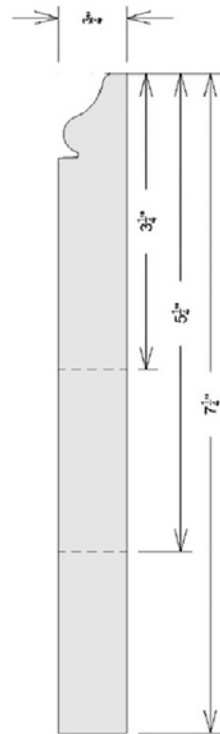
WSVJ

DESIGN CONSIDERATIONS

- 94" maximum standard length
- Primed all sides
- Finished color on all exposed faces

WINDSWEPT BASE BOARDS

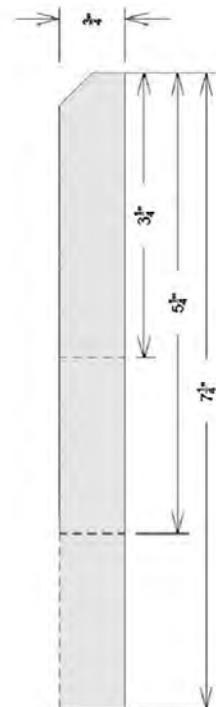
PROFILE BASE



SKU

BP192.25
BP195.25
BP197.25

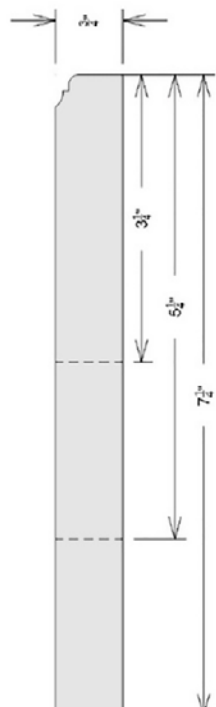
BEVELED BASE



SKU

BB3.25
BB5.25
BB7.25

DOOR PROFILE BASE



SKU

BDP3.25
BDP5.25
BDP7.25

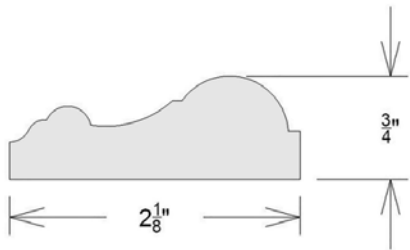
DESIGN CONSIDERATIONS

- 94" maximum standard length
- Primed all sides
- Finished color on all exposed faces



MISC. WINDSWEPT MOLDINGS

PICTURE FRAME
MOLDING



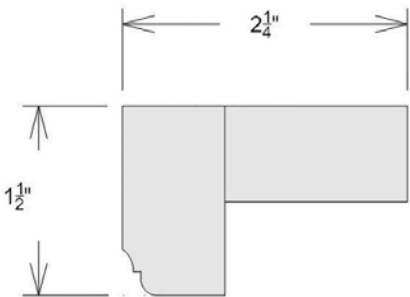
SKU

M095

DESIGN CONSIDERATIONS

- 94" maximum standard length

VALANCE



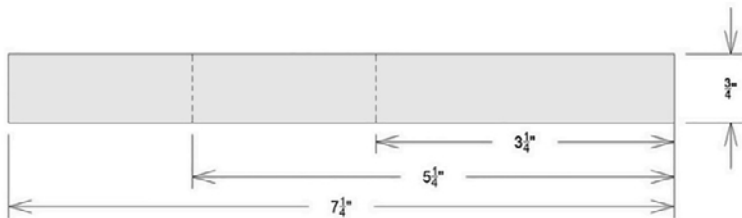
SKU

WSV
CV

DESIGN CONSIDERATIONS

- 94" maximum standard length
- Primed all sides
- Finished color on 1 face and profiled edge
- Available in a similar Sonoma design

FLAT STOCK



SKU

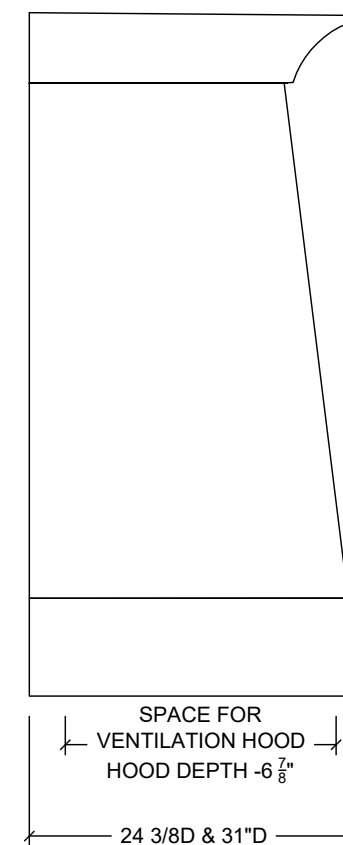
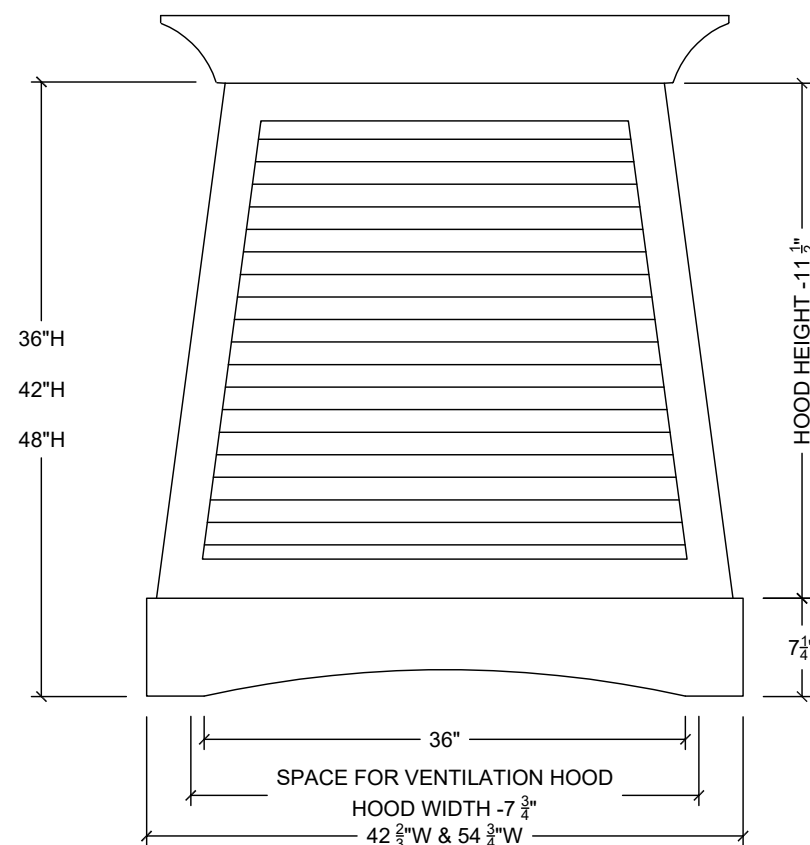
1x4x8
1x6x8
1x8x8

DESIGN CONSIDERATIONS

- Net size of 1x4x8 is 3/4" x 3 1/4" x 94"
- Net size of 1x6x8 is 3/4" x 5 1/4" x 94"
- Net size of 1x8x8 is 3/4" x 7 1/4" x 94"
- Flat stock is primed all sides Finished
- Color on 1 face and 1 edge
- Additional Finished faces and edges at added cost

HOODS

WINDSWEPT LOUVER HOOD



DESIGN CONSIDERATIONS

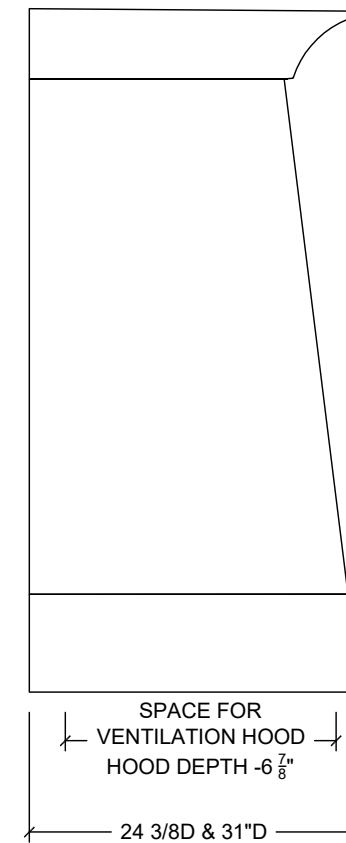
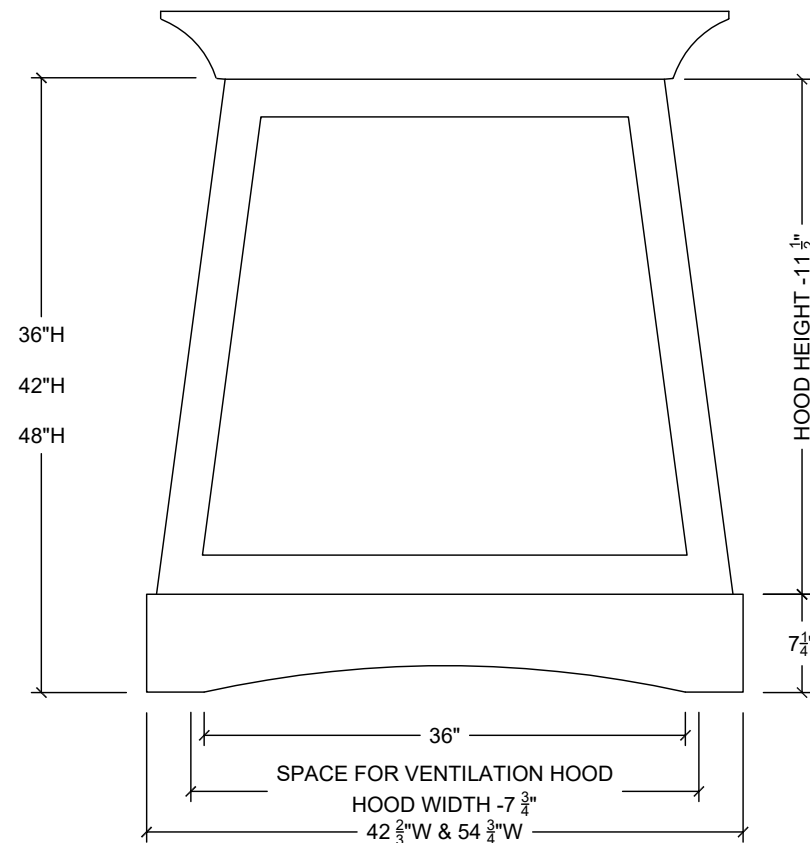
- Widths available 44" and 55"
- Heights available 36" ,42" and 48"
- Depths available 25" and 32"
- Crown molding is shipped loose and is optional
- Ventilator cut out is done on site
- Generally liner must be 36" above cooking surface

SKU

LH4436-25	LH5536-25
LH4436-32	LH5536-32
LH4442-25	LH5542-25
LH4442-32	LH5542-32
LH4448-25	LH5548-25
LH4448-32	LH5548-32



WINDSWEPT SHAKER HOOD



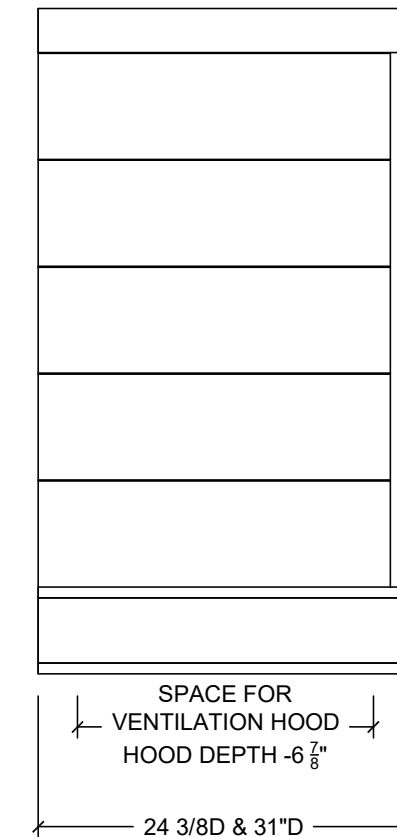
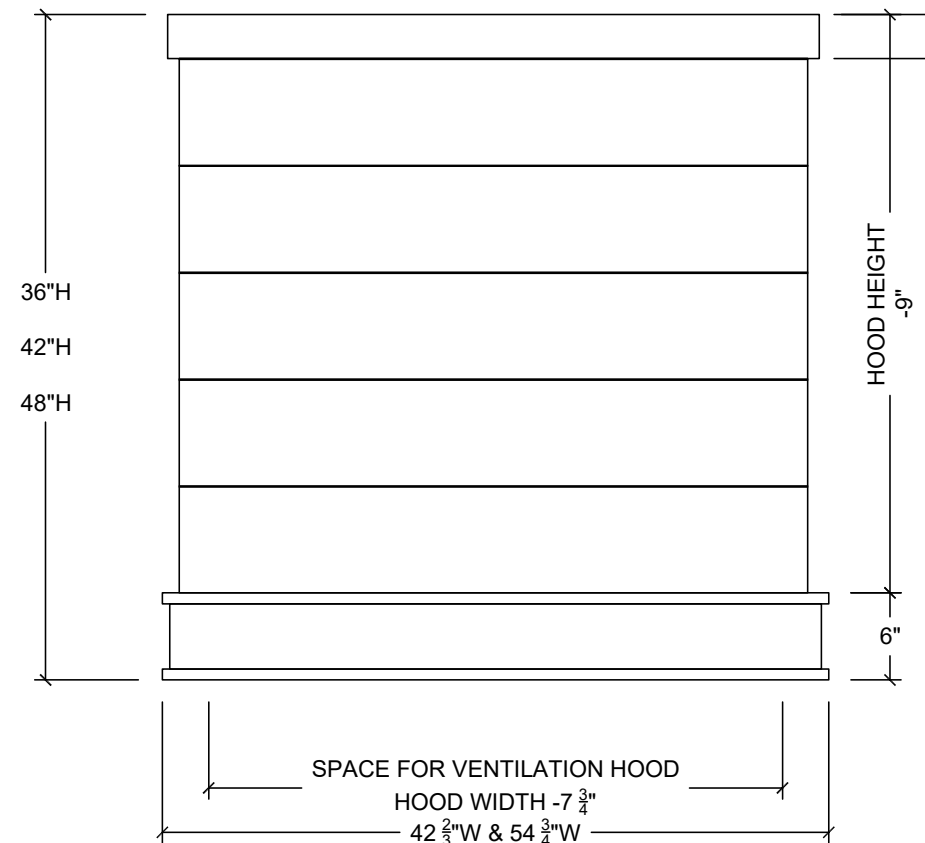
DESIGN CONSIDERATIONS

- Widths available 44" and 55"
- Heights available 36" ,42" and 48"
- Depths available 25" and 32"
- Crown molding is shipped loose and is optional
- Ventilator cut out is done on site
- Generally liner must be 36" above cooking surface

SKU

SH4436-25	SH5536-25
SH4436-32	SH5536-32
SH4442-25	SH5542-25
SH4442-32	SH5542-32
SH4448-25	SH5548-25
SH4448-32	SH5548-32

WINDSWEPT NICKEL JOINT HOOD



DESIGN CONSIDERATIONS

- Widths available 44" and 55"
- Heights available 36" ,42" and 48"
- Depths available 25" and 32"
- Crown molding is shipped loose and is optional
- Ventilator cut out is done on site
- Generally liner must be 36" above cooking surface

SKU

NJH4436-25	NJH5536-25
NJH4436-32	NJH5536-32
NJH4442-25	NJH5542-25
NJH4442-32	NJH5542-32
NJH4448-25	NJH5548-25
NJH4448-32	NJH5548-32



📞 321-308-3297

✉ SALES@ZAHBUILT.COM

📍 325 EAST DRIVE, MELBOURNE, FL 32904

ZAHBUILT.COM